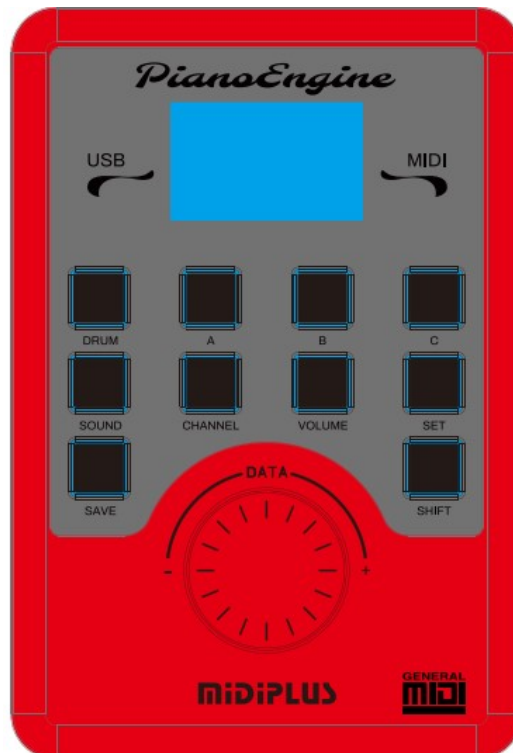


PianoEngine

Firmware update instructions

1. Tools

1. "PianoEngine" x1
2. USB cable(double male connector) x1
3. Micro USB cable x1

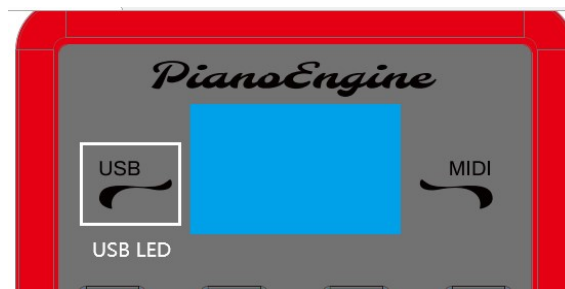


2. Update steps

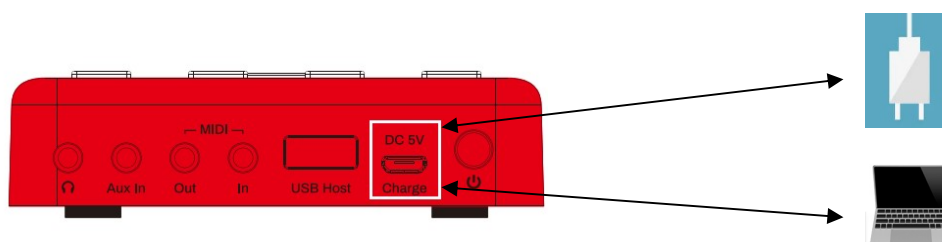
1. **Powered off:** Leave PianoEngine in the powered off state.
2. **Enter update mode:** First press and hold "VOLUME" and "SET" buttons at the same time, and then press the "Power Switch" once.



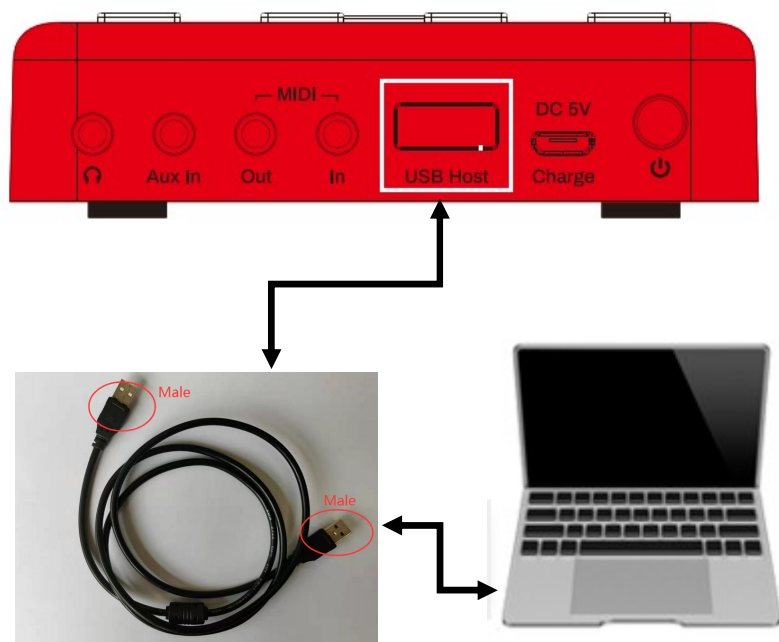
3. **Update mode status:** When step 2 is completed, the "USB LED" light will flash. It means that it has entered the update mode.



4. **External power supply:** When step 3 is completed, then power up the PianoEngine through micro USB cable (Insert micro USB cable into 5V adapter or computer). If you are not connected to an external power supply, you may fail to update .



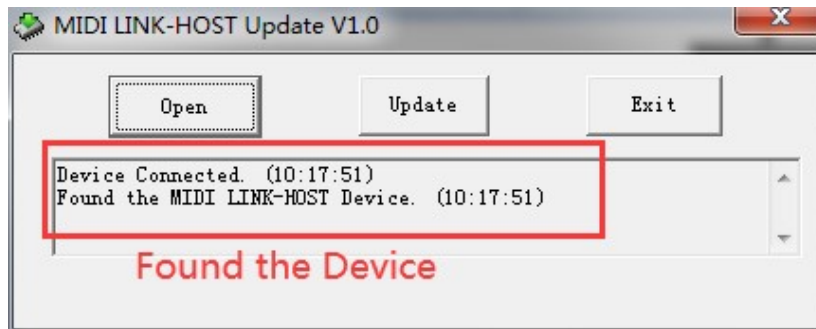
5. **Connect USB cable:** Use USB cable(double male connector) to plug in the <USB Host>interface and connect to computer . PianoEngine must enter update mode, then you connect it to your computer with a USB cable.



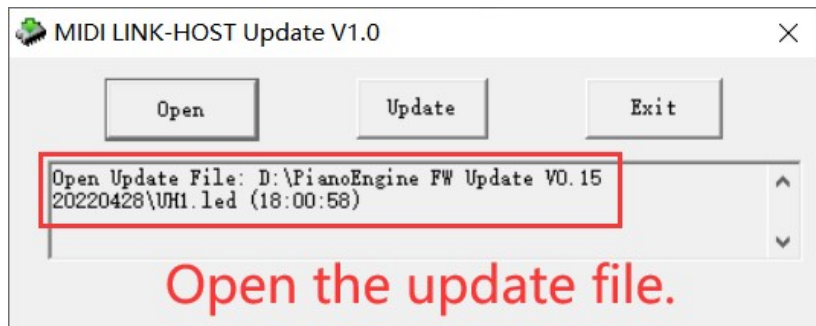
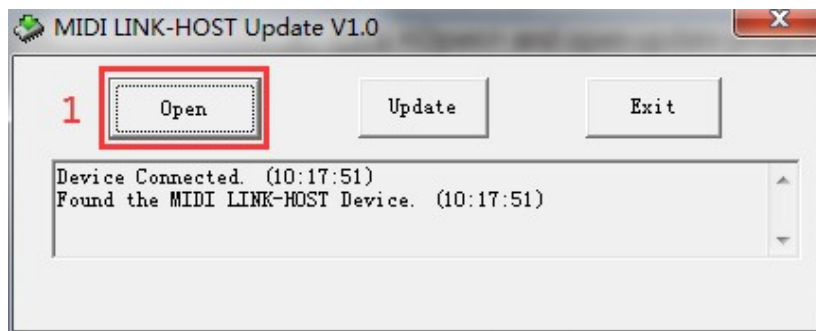
6. **Download the FW update package:** When you open the link below, you download the FW upgrade package for PianoEngine. Open the " PianoEngine FW Update V0.15 20220428" folder, then open the" UH1_En Update.exe" update tool.

https://www.midiplus.com.tw/cn/MIDIPLUS-Download/Firmware_Update/

7. **View the update device name:** If the preceding steps are complete, the upgrade software displays: **Device Connected.** If PianoEngine is not in update mode, or you do not have a USB cable connected to your computer, the software will prompt: Device Disconnected.



8. **Select the upgrade file:** Click "Open" button and open update file "UH1.led" in the "PianoEngine FW Update V0.15 20220428" folder.



9. **Update program:** Click "Update" button, wait for a moment, it will display update success 100%. You restart PianoEngine, you check the startup screen is V0.15, indicating that you have successfully upgraded.

